

Ministry of Tourism, Culture and Sport – Concussion Guidelines*

COMMON SIGNS AND SYMPTOMS OF CONCUSSION:

Following a blow to the head, face or neck, or a blow to the body that transmits a force to the head, a concussion should be suspected in the presence of any one or more of the following signs or symptoms:

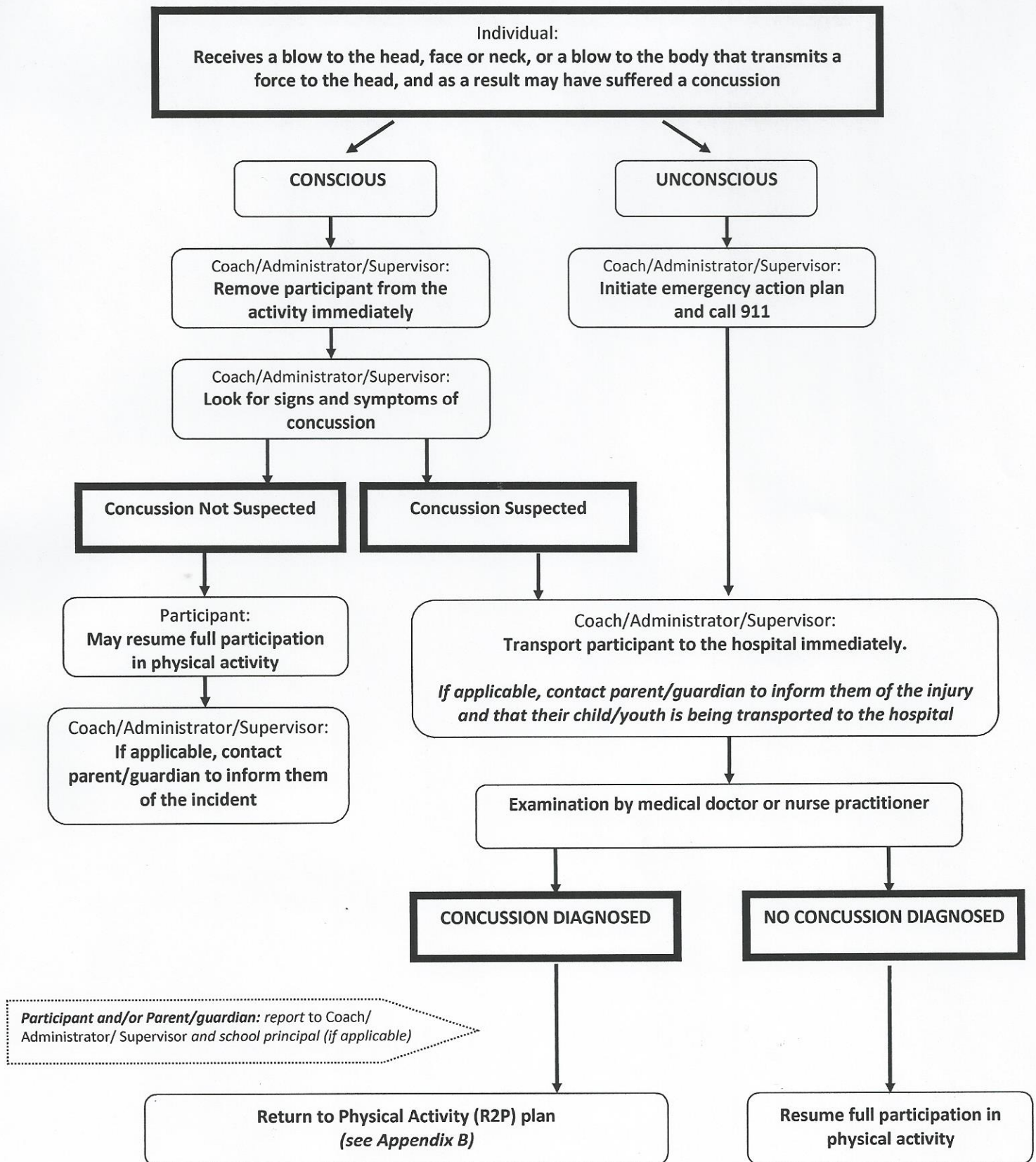
Possible Signs Observed <i>A sign is something that will be observed by another person (e.g., parent/guardian, teacher, coach, supervisor, peer).</i>	Possible Symptoms Reported <i>A symptom is something the student will feel/report.</i>
<p>Physical</p> <ul style="list-style-type: none"> • vomiting • slurred speech • slowed reaction time • poor coordination or balance • blank stare/glassy-eyed/dazed or vacant look • decreased playing ability • loss of consciousness or lack of responsiveness • lying motionless on the ground or slow to get up • amnesia • seizure or convulsion • grabbing or clutching of head <p>Cognitive</p> <ul style="list-style-type: none"> • difficulty concentrating • easily distracted • general confusion • cannot remember things that happened before and after the injury • does not know time, date, place, class, type of activity in which he/she was participating • slowed reaction time (e.g., answering questions or following directions) <p>Emotional/Behavioural</p> <ul style="list-style-type: none"> • strange or inappropriate emotions (e.g., laughing, crying, getting angry easily) <p>Sleep Disturbance</p> <ul style="list-style-type: none"> • drowsiness • insomnia 	<p>Physical</p> <ul style="list-style-type: none"> • headache • pressure in head • neck pain • feeling off/not right • ringing in the ears • seeing double or blurry/loss of vision • seeing stars, flashing lights • pain at physical site of injury • nausea/stomach ache/pain • balance problems or dizziness • fatigue or feeling tired • sensitivity to light or noise <p>Cognitive</p> <ul style="list-style-type: none"> • difficulty concentrating or remembering • slowed down, fatigue or low energy • dazed or in a fog <p>Emotional/Behavioural</p> <ul style="list-style-type: none"> • irritable, sad, more emotional than usual • nervous, anxious, depressed <p>Sleep Disturbance</p> <ul style="list-style-type: none"> • drowsy • sleeping more/less than usual • difficulty falling asleep

Additional Information:

- Signs/symptoms can appear right after the injury, or may appear within hours or days of the injury.
- The signs/symptoms may be different for everyone.
- An individual may be reluctant to report symptoms because of a fear that they will be removed from the activity, or their status on a team or in a game could be jeopardized.
- It may be difficult for younger children (under the age of 10) and those with special needs or where English/French is not their first language to communicate how they are feeling.
- Signs for younger children (under the age of 10) may not be as obvious as in older children/adults.

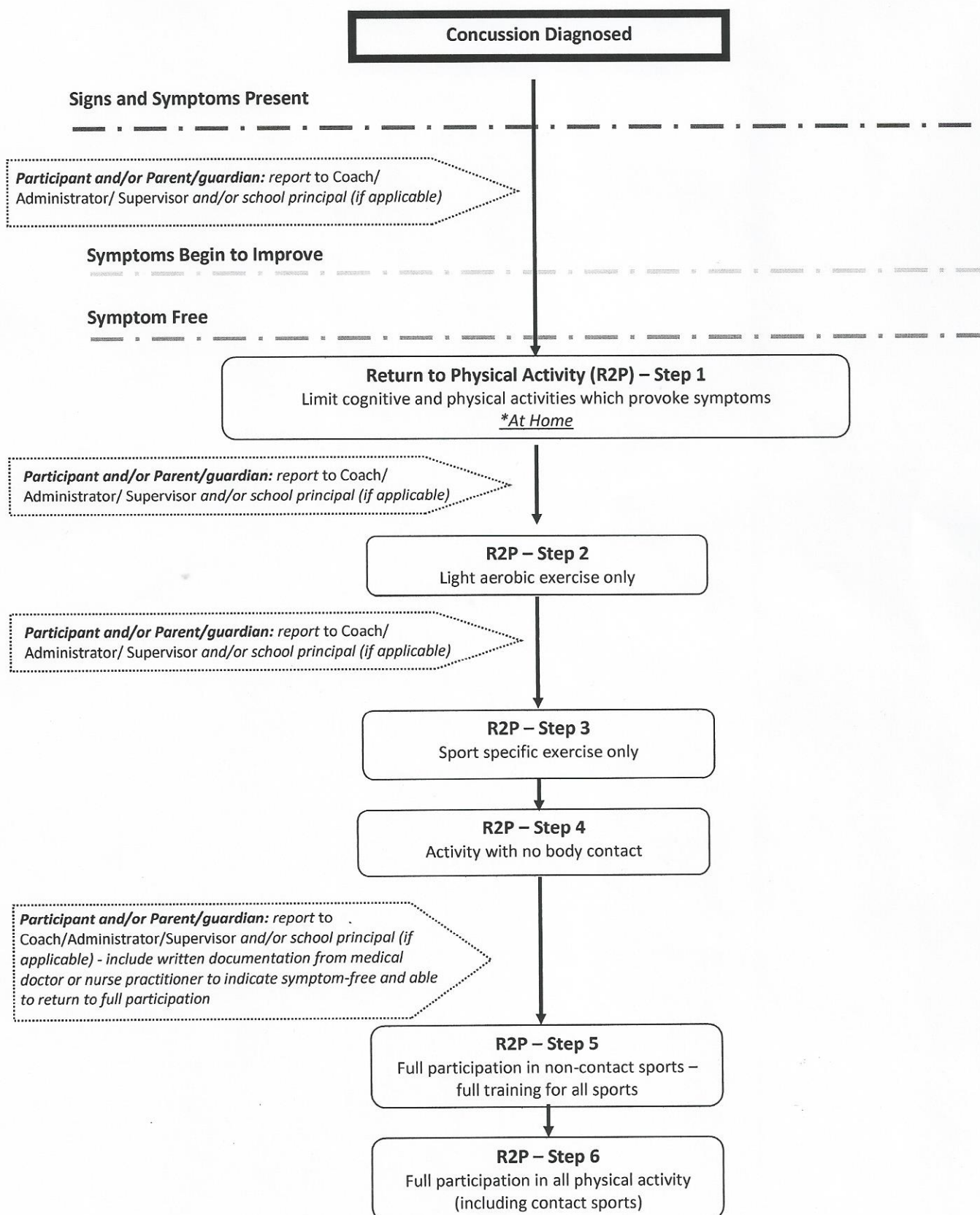
Ministry of Tourism, Culture and Sport – Concussion Guidelines*

Appendix A: INITIAL RESPONSE – Removal from Physical Activity



Ministry of Tourism, Culture and Sport – Concussion Guidelines*

Appendix B: RETURN TO PHYSICAL ACTIVITY (R2P)



*These Informational Guidelines have been prepared for general informational purposes only. They are not intended to and do not constitute any medical advice and do not contain any medical diagnoses, symptom assessments or medical opinions.